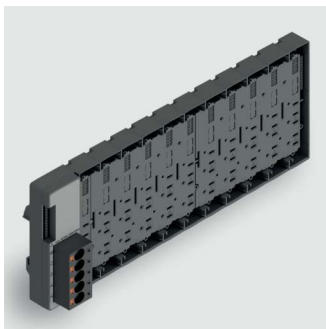


Technical data sheet

Load monitoring · LCOS accessories

LCOS-LUNA Extension module, active

Data bus, Power bus max. AC/DC 230 V, 100 A



Identification

Type LCOS-LUNA-EW-011-LB-03-1-L
Part No. [780523.011.1](#)

Product version

Datasheet version 04

Description

System Components Function carrier with data bus and power supply
Description LCOS-LUNA extension module active, with power supply max. AC/DC 230V, 11 slots, width: 282.5 mm, ready for connection

Electrical data Power Bus

Operating voltage Max. AC/DC 230 V
Operating current Max. AC/DC 100 A
Connection type 5× Push-In, min. 0,5 mm², max. 16 mm²

Slots

Slots 11-way

General

Housing material PA 6.6 (UL 94 V-0, NFF I2, F2)
Color of the housing Pebble grey
Mounting DIN rail mountable TS35 (EN 60715)
Max. altitude operation 2000 m max.

United Kingdom: LÜTZE Ltd.

Unit 3, Sandy Hill Park
Sandy Way, Amington • GB-Tamworth, Staffs B77 4DU
Tel. +44 (0)1827 31333-0
www.lutze.com • sales.gb@lutze.co.uk

Germany: Friedrich Lütze GmbH

Postfach 12 24 (PLZ 71366) • Bruckwiesenstraße 17-19 • D-71384 Weinstadt
Tel. +49 (0)7151 6053-0
www.luetze.de • info@luetze.de

29.01.2025 • Subject to technical modification

Part No. [780523.011.1](#) • Datasheet version: 04

page 1 of 5



SYSTEMATIC TECHNOLOGY

Technical data sheet

Load monitoring · LCOS accessories

Installation position	Vertical Horizontal
MTBF	on request
Degree of protection	IP20 (EN 60529)
Dimensions (w × h × d)	282.5 mm × 110.0 mm × 47.0 mm
Weight/unit	0.416 kg
PU (units)	1

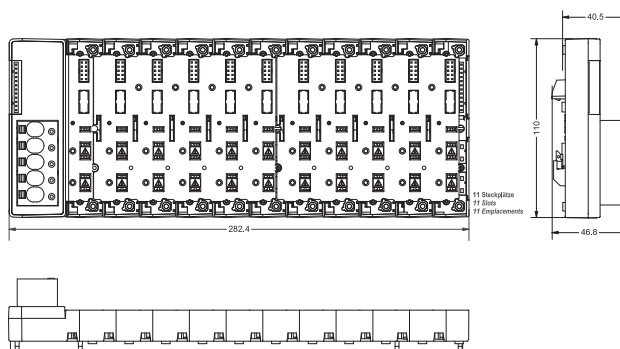
General ambient conditions

Operation temperature range	-25 °C ... +55 °C
Storage temperature range	-40 °C ... +85 °C
Over voltage category	II
Degree of pollution	2
Relative air humidity	10 % – 95 %, without condensation
Vibration resistance	0.7 g acc. to EN 60068-2-6
Shock resistance	15 g 11 ms acc. to IEC 60068-2-27

Certifications/Standards

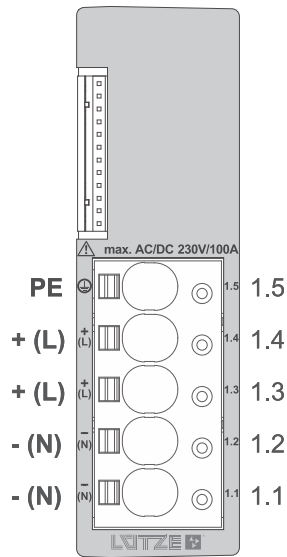
Conformity	CE UKCA FCC
Certifications	DNV (TAA00002SY) cULus (E170585)
Standards	DNV-CG-0339:2021 EN IEC 61000-6-2:2019 EN IEC 61000-6-4:2019 2014/30/EU (EMCD) UL 61010-1:2019 UL 61010-2-201:2018 CFR-47-2016 Part 15 Subpart B CAN/CSA-C22.2 No. 61010-1-12:2018 CAN/CSA-C22.2 No. 61010-2-201:2018

Dimensions

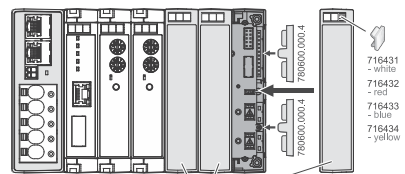
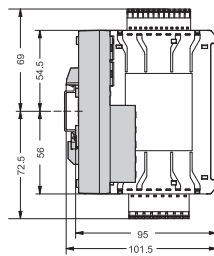
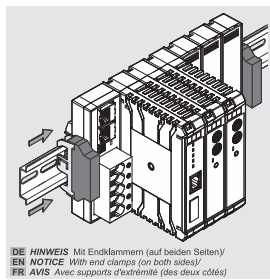


PIN assignment

780523.006.1
780523.011.1

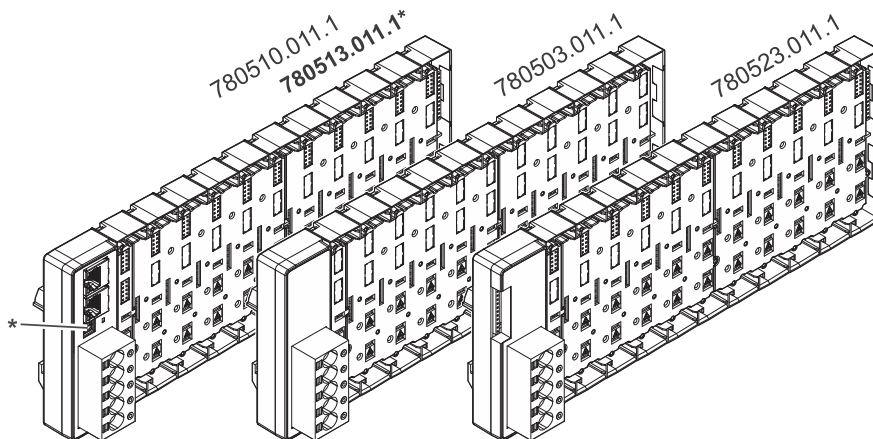


Use



DE Abdeckung Modulsteckplatz - Art.-Nr. 780610.225.2
EN Cover of the module slot - Item no. 780610.225.2
FR Couverture de l'emplacement du module - Réf. 780610.225.2

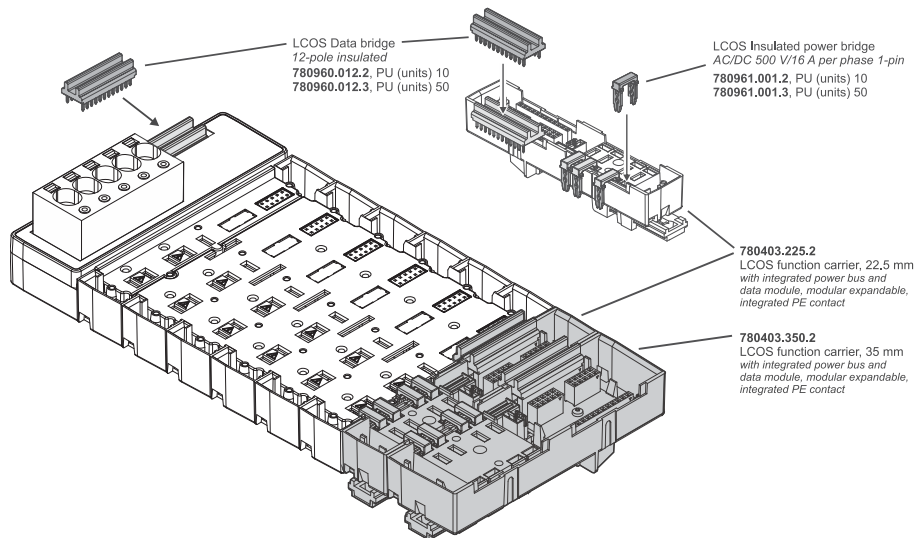
Use



Technical data sheet

Load monitoring · LCOS accessories

Use



Mounting diagram

DE Montage – Hutschiene

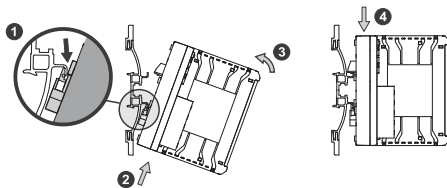
Vorgeschriebene Standard Einbaulage: vertikal, Abstand zu benachbarten Geräten (über und unter dem Gehäuse): 30mm

EN Mounting – DIN Rail

Default required mounting position: vertical, distance to surrounding devices (above and below the housing): 30mm

FR Montage – Rail profilé chapeau

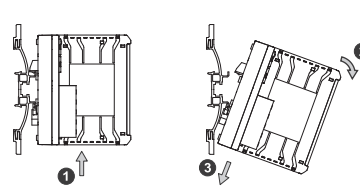
Position de montage requise par défaut: verticale, distance par rapport aux appareils environnants (au-dessus et en dessous du boîtier): 30mm



DE Demontage – Hutschiene

EN Dismounting – DIN Rail

FR Démontage – Rail profilé chapeau

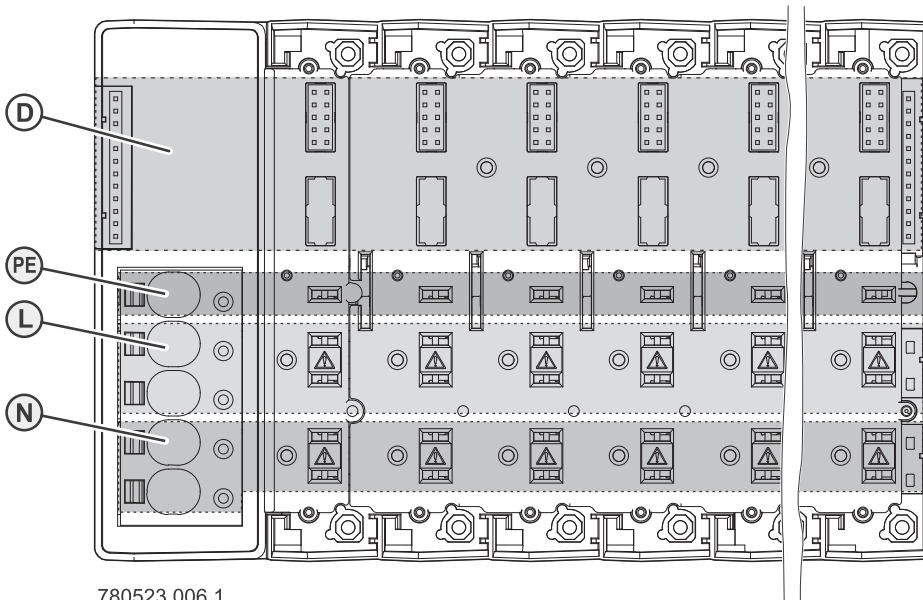


Mounting diagram

DE Verdrahtung EN Wiring FR Câblage

	Abisolierlänge Stripping Length Longueur de dénudage	Querschnitt Conductor Size Section
X1: 5-polig/5-pole (RM 10), Push-in		
eindrähtig/ solid/ monofilaire H05(07) V-U		0.5 ... 16 mm ² AWG 18 – 4
mehrdrähtig/ stranded/ multifilaire H07V-R		6 ... 16 mm ² AWG 9 – 4
feindrähtig/ fine stranded/ à fils de faible diamètre H05(07) V-K		0.5 ... 16 mm ² AWG 18 – 4
mit Aderendhülse (AEH) nach DIN 46 228/1 / with ferrule according to DIN 46 228/1 / avec embout selon DIN 46 228/1		0.5 ... 16 mm ² AWG 18 – 4
mit AEH mit Kragen nach DIN 46 228/4 / with ferrule with collar acc. to DIN 46 228/4 / avec embout avec collerette selon DIN 46 228/4		0.5 ... 16 mm ² AWG 18 – 4
18 mm = 0.71 inch		
X2: 2-polig/2-pole (RM 3,5), Push-in		
eindrähtig/ solid/ monofilaire H05(07) V-U		0.14 ... 1.5 mm ² AWG 28 – 16
mehrdrähtig/ stranded/ multifilaire H07V-R		0.14 ... 1.5 mm ² AWG 26 – 14
feindrähtig/ fine stranded/ à fils de faible diamètre H05(07) V-K		0.14 ... 1.5 mm ² AWG 26 – 14
mit Aderendhülse (AEH) nach DIN 46 228/1 / with ferrule according to DIN 46 228/1 / avec embout selon DIN 46 228/1		0.25 ... 1.5 mm ² AWG 25 – 14
mit AEH mit Kragen nach DIN 46 228/4 / with ferrule with collar acc. to DIN 46 228/4 / avec embout avec collerette selon DIN 46 228/4		0.25 ... 0.75 mm ² AWG 25 – 19
8-9 mm = 0.31 ... 0.35 inch		

Potential groups



780523.006.1
780523.011.1

1.	DE Potentialgruppen EN Potential groups FR Groupes de potentiel	3.2 Verstärkte Isolierung/ Reinforced insulation/ Isolation renforcée
(PE): PE		DE Minimale Luft- und Kriechstrecken EN Minimal clearance and creepage Distance
(D): Data-Bus		FR Distances d'isolement dans l'air et lignes de fuite minimales
(L): L („+“)		AC 3000V (>3mm; CTI 600): L+N ↔ PE+D
(N): N („-“)		
2.	DE Kapazitive Kopplung EN Capacitive coupling FR Couplage capacitif	3.3 Funktionsisolierung/ Functional insulation/ Isolation fonctionnelle
-		AC 500 V: PE ↔ D
3.	DE Trennung/ EN Isolating voltage/ FR Tension d'isolement	
3.1	Basisisolation/ Basic insulation/ Isolation de base	
DE Minimale Luft- und Kriechstrecken EN Minimal clearance and creepage Distance		
FR Distances d'isolement dans l'air et lignes de fuite minimales		
AC 1500V (>1,5mm; CTI 600): L ↔ N		