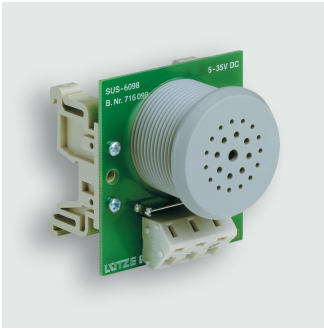


Technical data sheet

Piezo buzzer



Identification

Type	SUS-6135
Part-No.	716135

Product version

Datasheet version	02
-------------------	----

Use/Application/Properties

Description	Buzzer module for rail applications. The volume of the buzzer module can be reduced to 60 dB by installing a resistor in place of the standard wire jumper (see table)
-------------	--

Technical data

Voltage range	DC 5 V – 35 V
Rated current (at U_N)	13 mA at DC 35 V
Rated frequency f_N	3500 Hz
Sound pressure (in delivery state)	92 dB (at distance of 1 m, at 24 V operating voltage)
Buzzer type	Piezo Ceramic

General

Connection type	Spring terminal: single stranded 0.08 – 2.5 mm ² , fine stranded 0.08 – 2.5 mm ² Stripping length: 5 – 6 mm Screwdriver: 3.5 × 0.5 mm
Mounting	DIN rail mounting
Operation temperature range	-25 °C ... +70 °C
Storage temperature range	-25 °C ... +80 °C
Dimensions (w × h × d)	50.0 mm × 55.0 mm × 50.0 mm
Weight/unit	0.045 kg

Lütze Transportation GmbH

Postfach 12 24 (PLZ 71366) • Bruckwiesenstraße 17-19 • D-71384 Weinstadt
Tel. +49 (0)7151 6053-545 • Fax +49 (0)7151 6053-6545
www.luetze-transportation.com • sales.transportation@luetze.de

Technical data sheet

Piezo buzzer

Miscellaneous

Volume settings

Sound pressure (at 24 V operating voltage) @ Serial resistor

75 dB @ 1 k Ω / 0.6 W

70 dB @ 3.3 k Ω / 0.6 W

65 dB @ 6.8 k Ω / 0.6 W

60 dB @ 18 k Ω / 0.6 W

Standards/Certifications

Standards

EN 50155: Railway applications – Rolling stock – Electronic equipment

EN 50121-3-2: Railway applications – Electromagnetic compatibility – Part 3-2: Rolling stock – Apparatus

EN 50124-1: Railway applications – Insulation coordination – Part 1: Basic requirements – Clearances and creepage distances for all electrical and electronic equipment

EN 61373: Railway applications – Rolling stock equipment – Shock and vibration tests

The standard applicable to this product is dependent on the version available for development. The standards applicable to this product are available on request.

Notes and Comments

Comments

Connection "CP" not operational!

Dimensions

