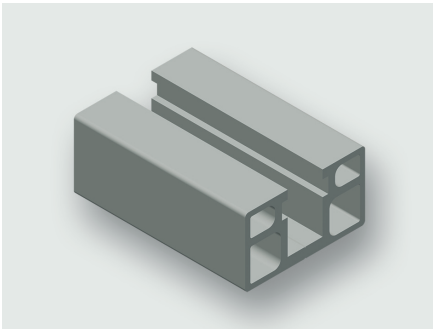


## Technical data sheet

### Mounting Accessories

---

#### RG035 (gliding groove profile)



---

#### Identification

Type	RG035 0100
Part No.	380182M0001

---

#### Product version

Datasheet version	00
-------------------	----

---

#### Description

Module type	RG035
Description	<p>RG035 adapter rail with incorporated sliding nut channel is intended for vertical mounting of components. RG adapter rails 100mm contain mounting holes and can thus be easily secured onto the mounting rails. Two rails of equal length make an RG035 set.</p> <p>An improved EMC connection can be achieved due to the larger contact area of RG035 rails.</p> <p>Sliding nuts, sliding nut retainers and screws for installation should be ordered separately.</p>

---

#### Technical data

Rail height	20 mm
Length	100 mm

---

#### General

Material	Aluminum
Surface	polished
max. torque	Gleitmutter M6: 8 Nm, Gleitmutter M8: 10 Nm
PU (units)	1

---

#### USA: LUTZE INC.

13330 South Ridge Drive • Charlotte, NC 28273, USA  
Tel. +1 (704) 504-0222 • Fax +1 (704) 504-0223  
[www.lutze.com](http://www.lutze.com) • [info@lutze.com](mailto:info@lutze.com)

22.04.2021 • Subject to technical modification  
Part No. 380182M0001 • Datasheet version: 00

**Dimensions**

