

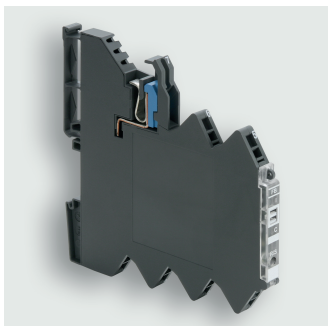
Technical data sheet

Load monitoring · LOCC-Box

Electronic load monitoring up to DC 10 A

Single-channel design, Adjustable current range: DC 1 A – 10 A

Adjustable characteristics, fast, medium, slow 1, -2, -3



Identification

| | |
|----------|--------------------|
| Type | LOCC-Box-FB 7-6401 |
| Part No. | 716401.0050 |

Product version

| | |
|-------------------|----|
| Datasheet version | 00 |
|-------------------|----|

Input

| | |
|----------------------------|---------------------------------|
| Type of function | 1-channel 1 pin switching |
| Rated voltage U_N | DC 12/24 V |
| Operation voltage range | DC 10–30 V |
| Input voltage range | DC 10 V – 30 V |
| Rated current I_N | DC 10 A |
| Supply current | DC 40 A over Cu-rails 10 × 3 mm |
| Reverse voltage protection | internal electronics |
| Connection type input | screwless contact slide |

Control input (Set / Reset)

| | |
|--------------|--|
| Signal level | DC 12/24 V acc. to EN 61131 |
| OFF | Pulse with falling edge >100 ms, <800 ms |
| ON | Pulse with falling edge > 1 s |

Output

| | |
|-------------------|--------------|
| Switching element | MOSFET |
| Output current | max. DC 10 A |

United Kingdom: LÜTZE Ltd.

Unit 3, Sandy Hill Park
Sandy Way, Amington • GB-Tamworth, Staffs B77 4DU
Tel. +44 (0)1827 31333-0 • Fax +44 (0)1827 31333-2
www.lutze.com • sales.gb@lutze.co.uk

Germany: Friedrich Lütze GmbH

Postfach 12 24 (PLZ 71366) • Bruckwiesenstraße 17-19 • D-71384 Weinstadt
Tel. +49 (0)7151 6053-0 • Fax +49 (0)7151 6053-277(-288)
www.luetze.de • info@luetze.de

Technical data sheet

Load monitoring · LOCC-Box

| | |
|-----------------------|--|
| Voltage drop | <170 mV (10 A) |
| Status display output | LED green: operating voltage present, no error LED red: error in load circuit |
| Switch-on capacity | 10000 µF |
| Current range | 1 A – 10 A (adjustable via switch in 1 A steps) |
| Characteristic | fast (1), medium (2), slow 1 (3), slow 2 (4), slow 3 (5) see 'characteristic curves' |

Signal output

| | |
|-------------------|--|
| Signal level | DC 12/24 V: operating voltage on standby, no error, DC 0 V: error, output switched off and manual "OFF" |
| Switching element | Transistor, collector with pull-up resistance |

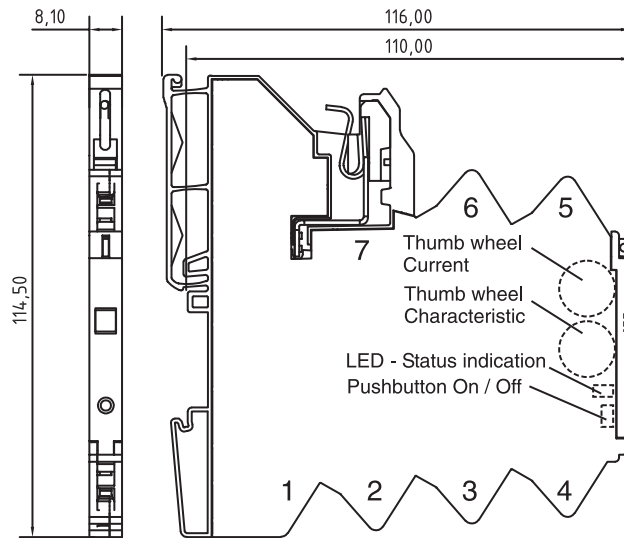
General

| | |
|-----------------------------|---|
| Operation temperature range | -25 °C ... +50 °C |
| Storage temperature range | -40 °C ... +85 °C |
| Dimensions (w × h × d) | 8.1 mm × 114.5 mm × 116.0 mm |
| Housing material | PA 6.6 (UL 94 V-0, NFF I2, F2) |
| Color of the housing | basalt grey |
| Mounting | DIN rail mountable TS35 (EN 60715) |
| Installation position | Any |
| MTBF | 690000 h |
| Protection class | IP20 |
| Connection type | Spring terminal 0.25 mm ² – 2.5 mm ² |
| Weight/unit | 0.105 kg |
| PU (units) | 50 |

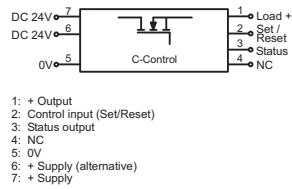
Certifications/Standards

| | |
|----------------|---|
| Certifications | cULus (E135145) GL |
| Standards | EN 60950-1 EN 61131-1, 2 EN 61000 EN 60947-4-1 EN 55022 |

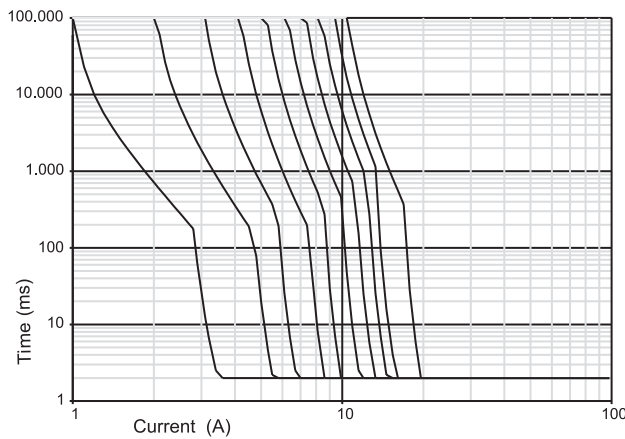
Dimensions



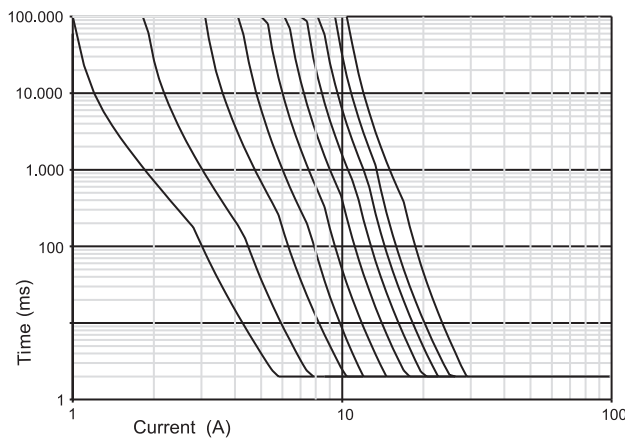
PIN assignment



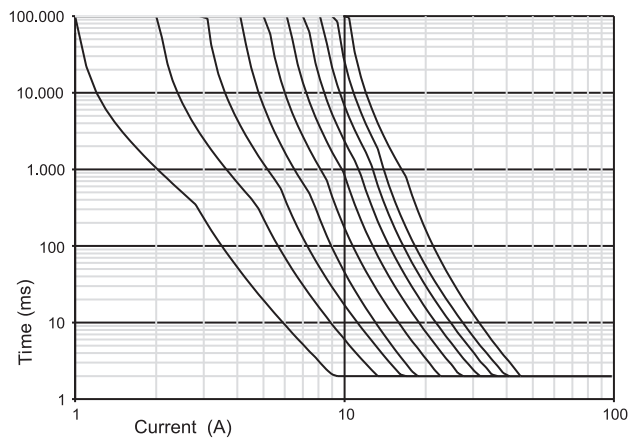
1: Characteristic fast



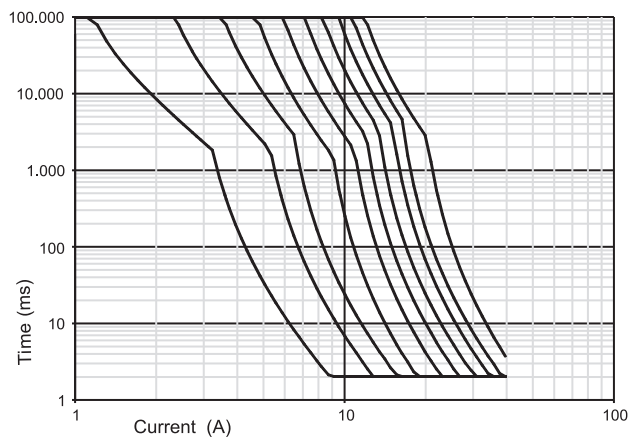
2: Characteristic medium



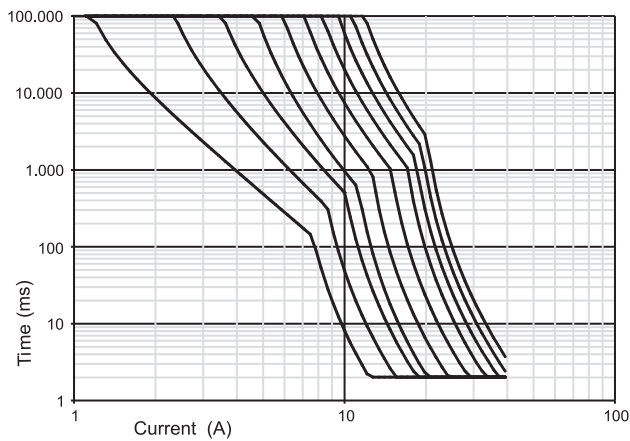
3: Characteristic slow-1



4: Characteristic slow-2



5: Characteristic slow-3



Signal output

